

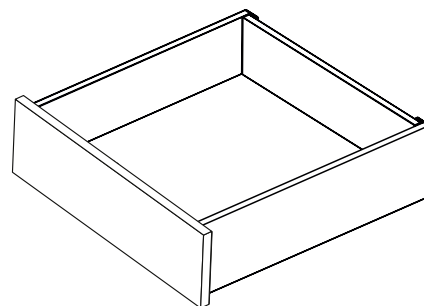
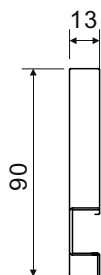


# GUIDE PER CASSETTI

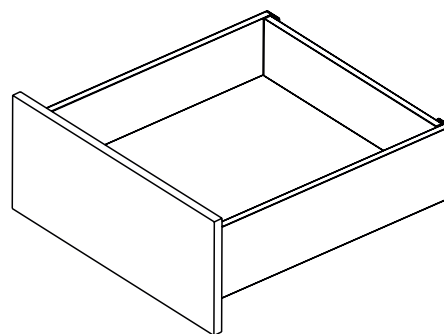
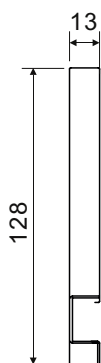
## DRAWERS

**Minimal ● Smooth ● Silent****Product Range Introduction****SCS-306D series***Standard drawer*

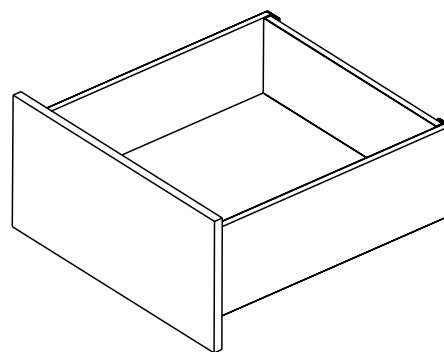
- Side height 90mm
- High precision synchronised runner
- For 16mm drawer bottom panel
- 35kg loading capacity
- Cutlery accessory optimum organisation
- Available length : 300, 350, 400, 450, 500, 550mm

**SCS-307D series***Heightening drawer*

- Side height 128mm
- High precision synchronised runner
- For 16mm drawer bottom panel
- 35kg loading capacity
- Available length : 300, 350, 400, 450, 500, 550mm

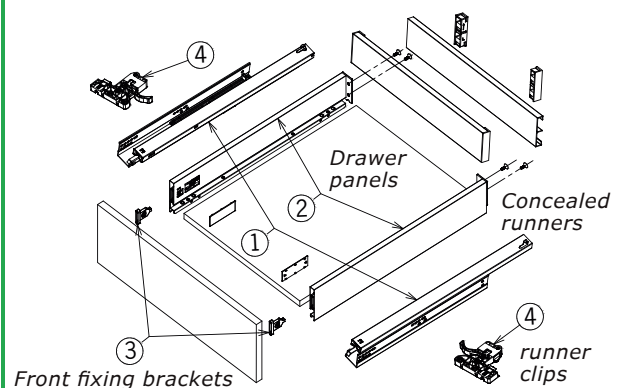
**SCS-308D series***Heightening drawer*

- Side height 175mm
- High precision synchronised runner
- For 16mm drawer bottom panel
- 35kg loading capacity
- Available length : 300, 350, 400, 450, 500, 550mm





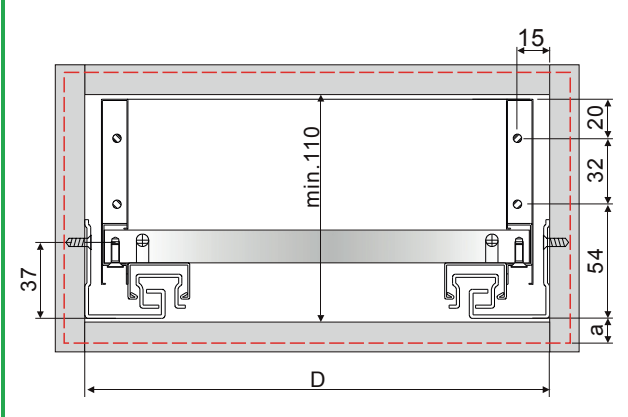
### Standard Height Drawer Components



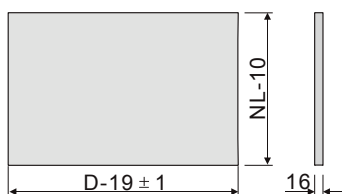
### SCS-306D series standard height drawer description

- **D+SLIMBOX** side height 90mm
- Twin-walled steel drawer with hidden full extension 30kgs load concealed runners
- High precision synchronised runner, soft-closing system and smooth drawer movements
- 2-dimensional front adjustment
- Quick installation and dismantle
- Cutlery accessory optimum organisation

### Installation dimensions

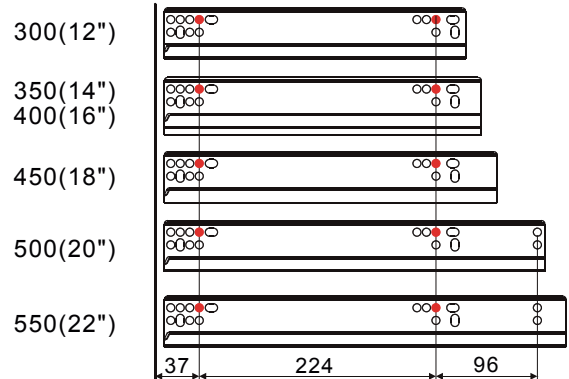


### Drawer base dimensions



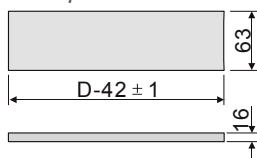
$D$  = Width of the internal cabinet  
 $NL$  = Normal length

### Mounting positions for slide profiles

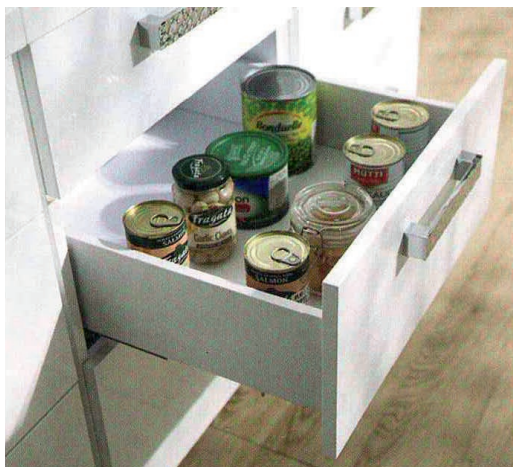


### Drawer back panel dimensions

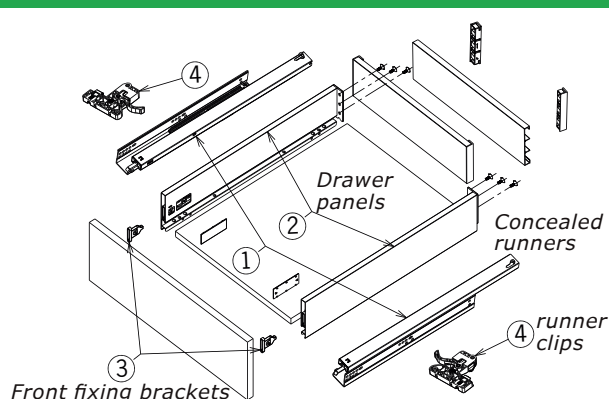
Woodon drawer back panel



Code No.	Normal Length (NL)	Min. Depth of Cabinet	Usable Depth	Min. Height of Cabinet	Color
					DGY
SCS-306D/300	300mm	305mm	274mm	110mm	Dark Grey
SCS-306D/350	350mm	355mm	324mm	110mm	Dark Grey
SCS-306D/400	400mm	405mm	374mm	110mm	Dark Grey
SCS-306D/450	450mm	455mm	424mm	110mm	Dark Grey
SCS-306D/500	500mm	505mm	474mm	110mm	Dark Grey
SCS-306D/550	550mm	555mm	524mm	110mm	Dark Grey



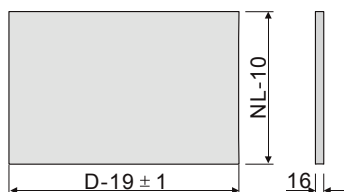
### 128mm Heightening Drawer Components



### SCS-307D series Heightening drawer description

- **D+SLIMBOX** side height 128mm
- Twin-walled steel drawer with hidden full extension 30kgs load concealed runners
- High precision synchronised runner ,soft-closing system and smooth drawer movements
- 2-dimensional front adjustment
- Quick installation and dismantle
- Optional dividers to make max.use of space

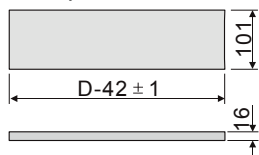
### Drawer base dimensions



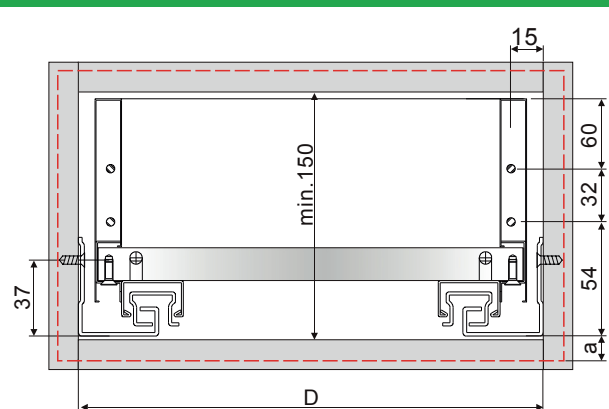
*D=Width of the  
internal cabinet*  
*NL=Normal length*

### Drawer back panel dimensions

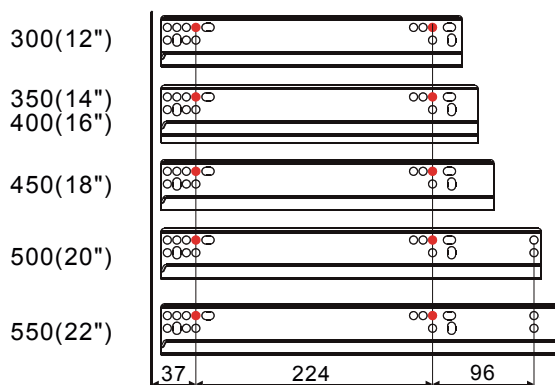
*Woodon drawer  
back panel*



### Installation dimensions



### Mounting positions for slide profiles

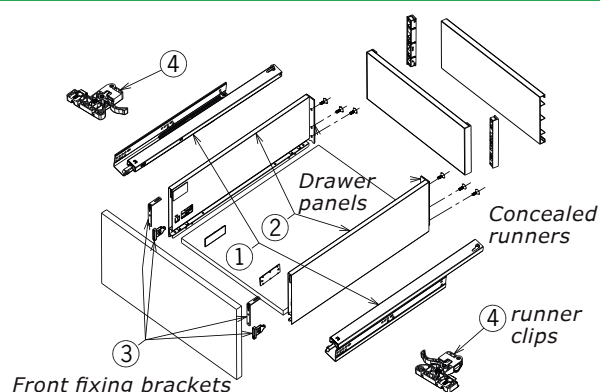


Code No.	Normal Length (NL)	Min. Depth of Cabinet	Usable Depth	Min. Height of Cabinet	Color
					DGY
SCS-307D/300	300mm	305mm	274mm	150mm	Dark Grey
SCS-307D/350	350mm	355mm	324mm	150mm	Dark Grey
SCS-307D/400	400mm	405mm	374mm	150mm	Dark Grey
SCS-307D/450	450mm	455mm	424mm	150mm	Dark Grey
SCS-307D/500	500mm	505mm	474mm	150mm	Dark Grey
SCS-307D/550	550mm	555mm	524mm	150mm	Dark Grey





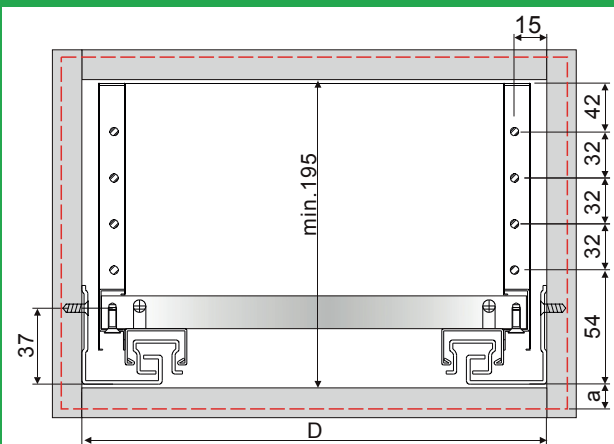
### 175mm Heightening Drawer Components



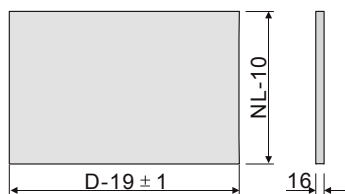
### SCS-308D series Heightening drawer description

- **D+SLIMBOX** side height 175mm
- Twin-walled steel drawer with hidden full extension 30kgs load concealed runners
- High precision synchronised runner, soft-closing system and smooth drawer movements
- 2-dimensional front adjustment
- Quick installation and dismantle
- Optional dividers to make max. use of space

### Installation dimensions



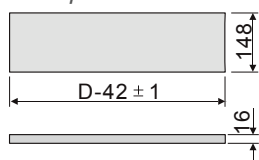
### Drawer base dimensions



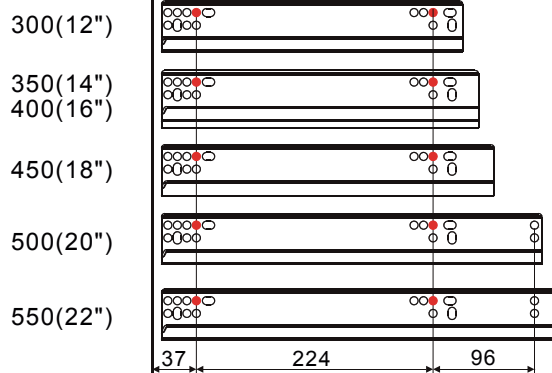
D=Width of the internal cabinet  
NL=Normal length

### Drawer back panel dimensions

Woodon drawer back panel



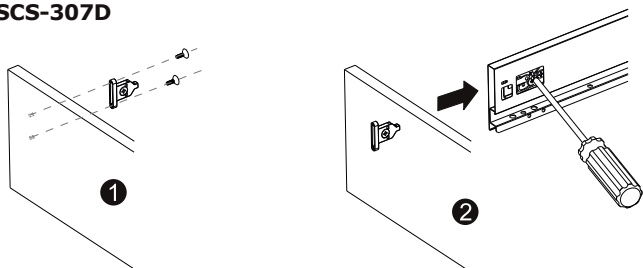
### Mounting positions for slide profiles



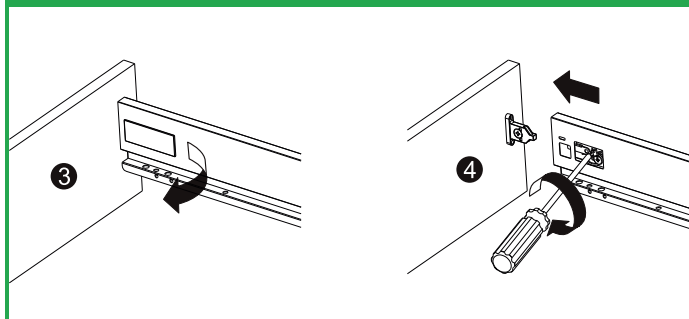
Code No.	Normal Length (NL)	Min. Depth of Cabinet	Usable Depth	Min. Height of Cabinet	Color
					DGY
SCS-308D/300	300mm	305mm	274mm	195mm	Dark Grey
SCS-308D/350	350mm	355mm	324mm	195mm	Dark Grey
SCS-308D/400	400mm	405mm	374mm	195mm	Dark Grey
SCS-308D/450	450mm	455mm	424mm	195mm	Dark Grey
SCS-308D/500	500mm	505mm	474mm	195mm	Dark Grey
SCS-308D/550	550mm	555mm	524mm	195mm	Dark Grey

### Drawer front panel assembly

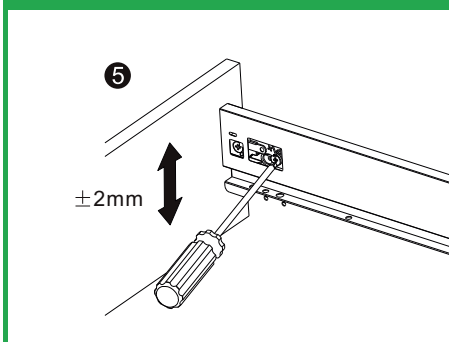
SCS-306D  
SCS-307D



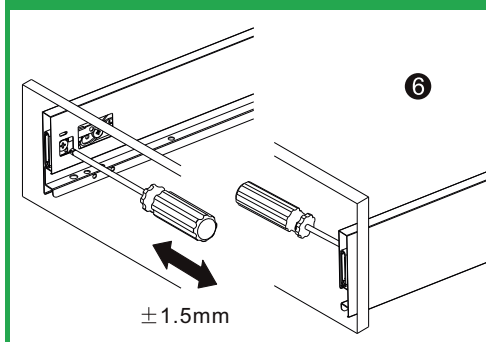
### Remove of the drawer front panel



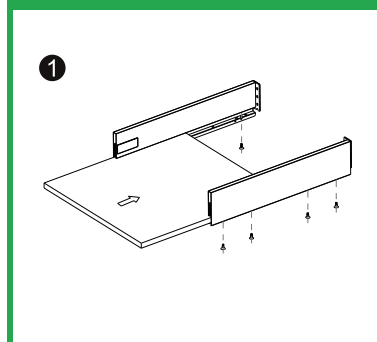
### Vertical adjustment of drawer front panel.



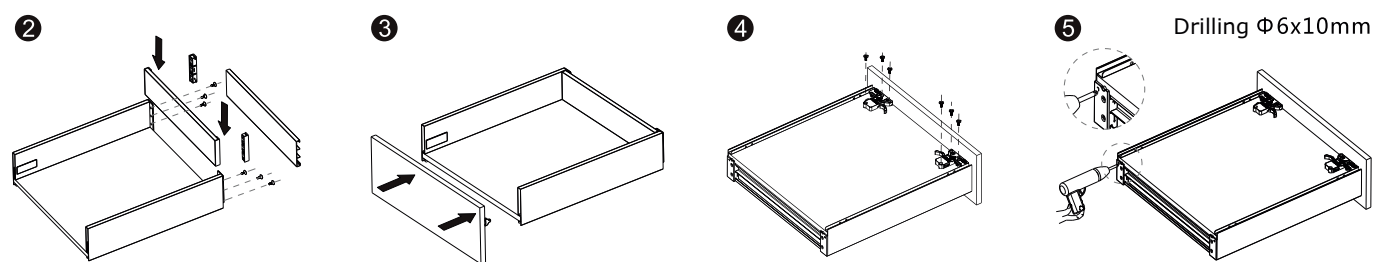
### Horizontal adjustment of drawer front panel.



### Drawer assembly

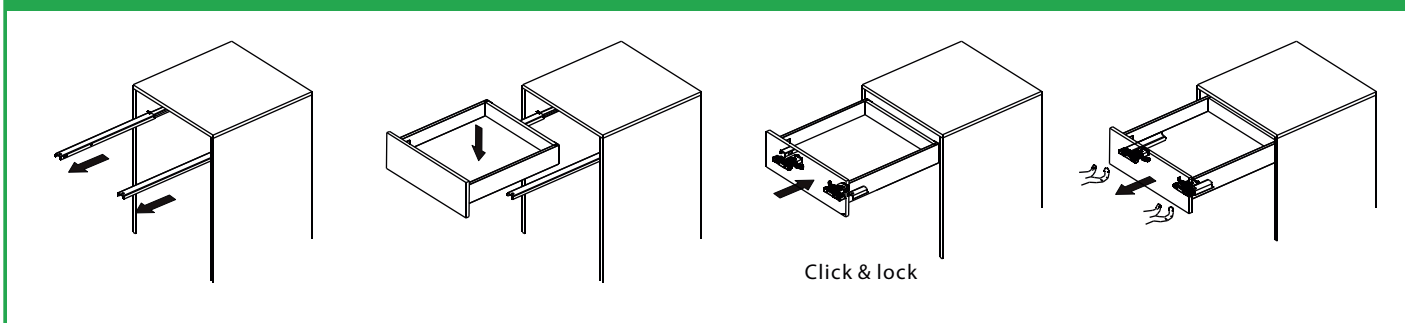


### Drawer assembly



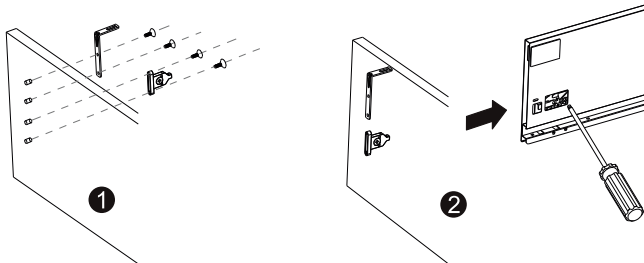
For SCS-306D series - For SCS-307D series

### Drawer insertion and removal

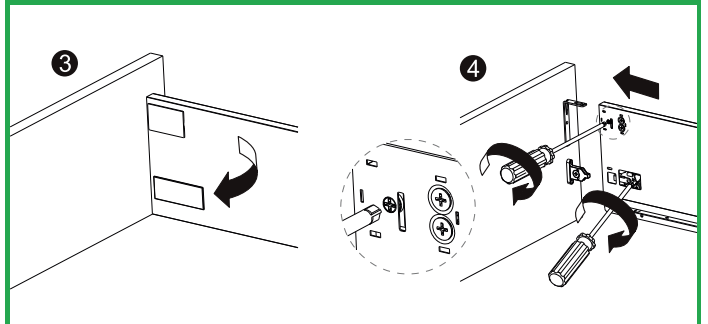


### Drawer front panel assembly

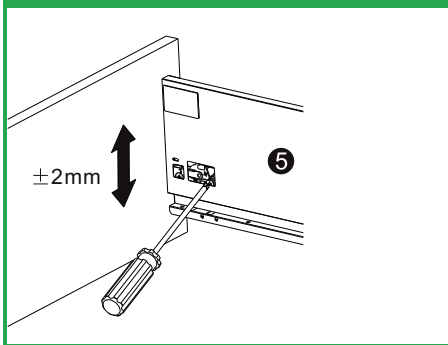
SCS-308D



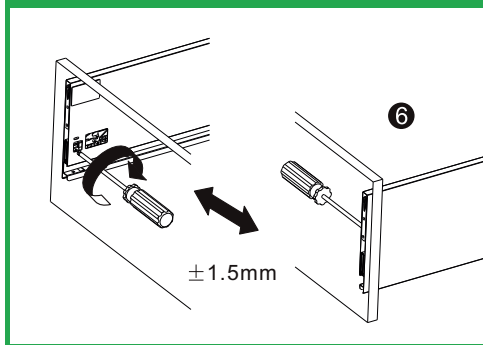
### Remove of the drawer front panel



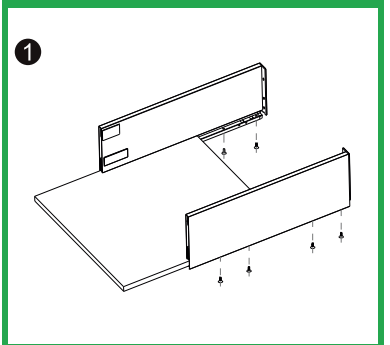
### Vertical adjustment of drawer front panel.



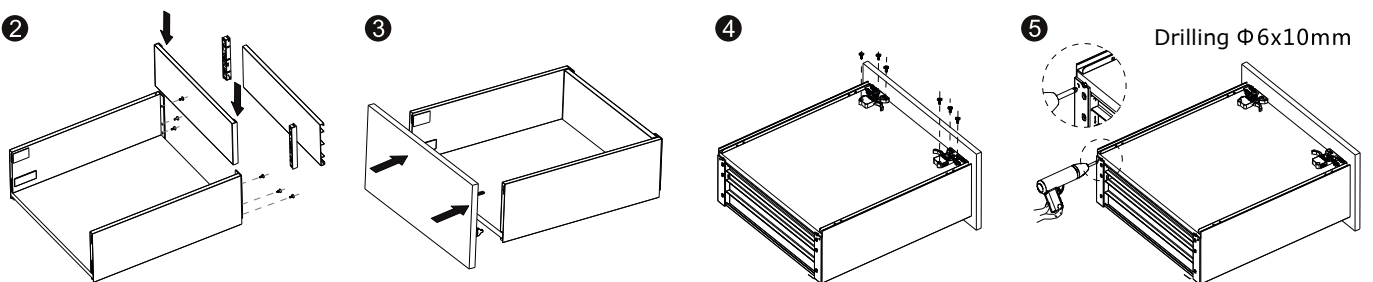
### Horizontal adjustment of drawer front panel.



### Drawer assembly

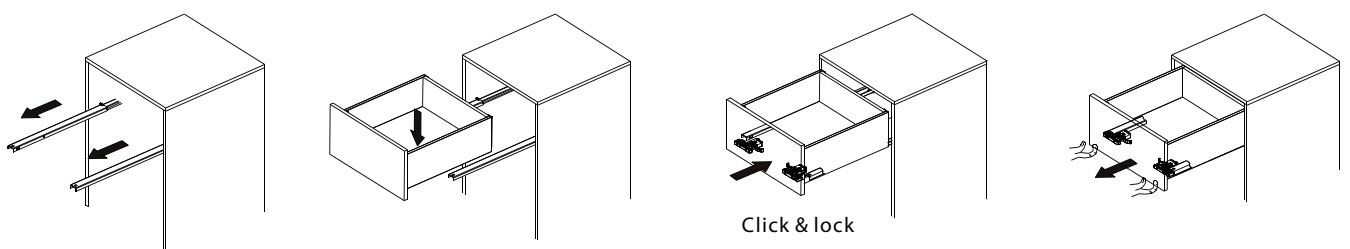


### Drawer assembly



For SCS-308D series

### Drawer insertion and removal



## FSCS-316...



### APPLICAZIONE:

- Capacità di carico: 30 kg
- Estensione completa
- Facile installazione e rimozione del cassetto
- Sistema di frenatura silenzioso (nessun rumore)
- Regolazione altezza del cassetto: 0 ~ +3mm
- Larghezza max. cassetto consigliata 1200 mm

### APPLICATION:

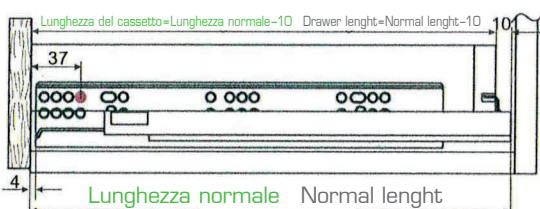
- Load capacity: 30 kg
- Full extension
- Easy installation and removal of drawer
- Silent brake system smooth run without noise
- Drawer height adjustment: 0 ~ +3mm
- Recommend max. width drawer 1200 mm

### Schema di foratura

Drilling pattern

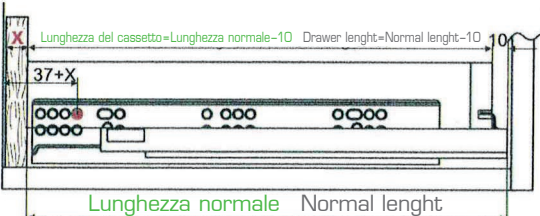
### Cassetto con frontale

Drawer with front



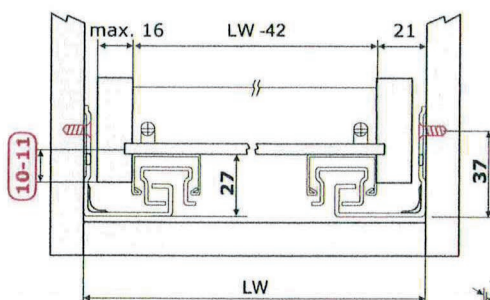
### Cassetto interno

Internal drawer



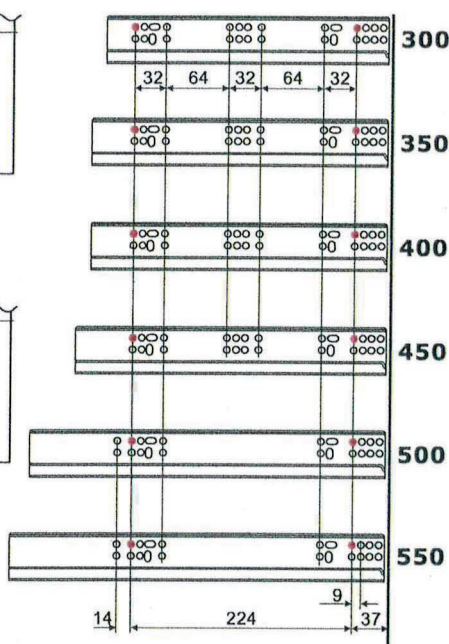
### Dimensioni di fissaggio

Fixing dimensions



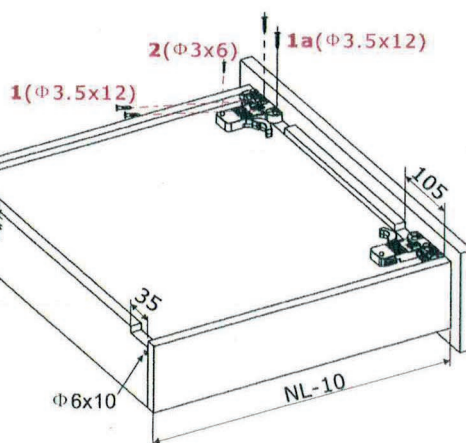
### Posizione dei fori di fissaggio

Fixing holes position



### Dimensioni e foratura del cassetto

Dimensions and drilling of the drawer



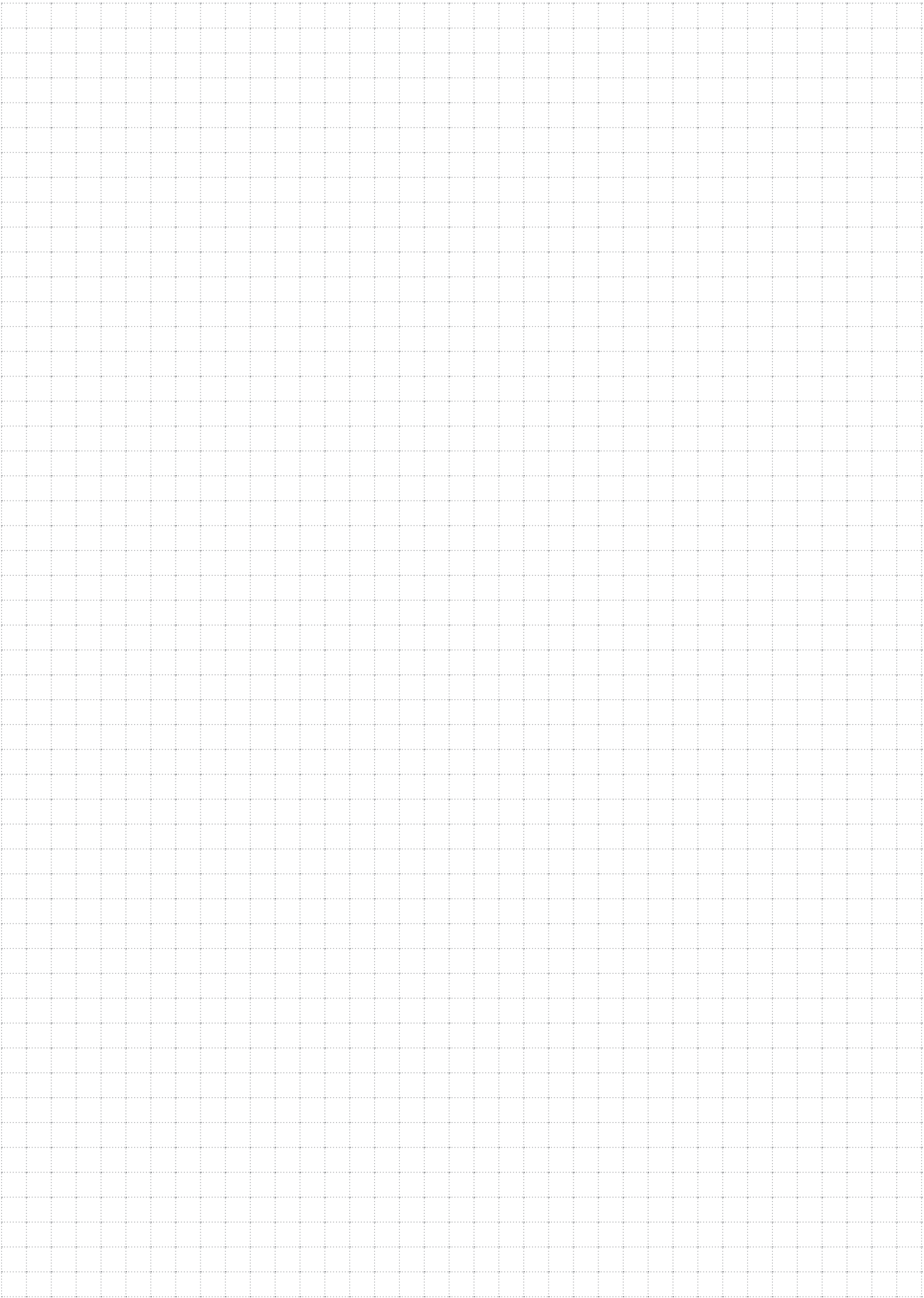
### Dimensione standard

Standard dimension

Item No.	Normal length	Drawer depth	
SCS-316A	300	290	10
SCS-316B	350	340	10
SCS-316C	400	390	10
SCS-316D	450	440	10
SCS-316E	500	490	10
SCS-316F	550	540	10

Procedura di fissaggio a vite per il dispositivo a clip: 1-2  
Procedure of screw fixing for the clip device: 1-2

1a: adatto per il fondo del cassetto ≥ 9 mm  
1a: suitable for drawer bottom board ≥ 9 mm



**DANCO spa**

20837 VEDUGGIO (MB) - via Volta, 12

Tel. +39 - 0362 998752 r.a.

Fax +39 - 0362 998730 / +39 - 0362 998078

[danco@danco.it](mailto:danco@danco.it)