



SERIE F250

FLAP DOWN OPENING
MECHANISM





**CERNIERE PER MOBILI DAL 1956
FURNITURE HINGES SINCE 1956**

Fondata nel 1956, la DANCO nasce dall'esperienza diretta nella produzione di accessori per mobili e minuterie metalliche. Una passione, quella per la ferramenta, che sta alla base della storia della DANCO e dei suoi fondatori, che hanno saputo trasformare un'azienda a carattere familiare, in una società con una posizione di rilievo nel settore della produzione di cerniere per mobili. Ai figli, il merito di averla portata attraverso il dinamismo e la professionalità, in una realtà in grado di confrontarsi ad importanti livelli nazionali ed internazionali.

Founded in 1956, DANCO came about from a first-hand experience in the production of furniture accessories and small parts. The passion for iron fittings which drives DANCO and its founders has allowed them to transform a family-run business into a leading company in the production of furniture hinges. Their sons are now taking DANCO even further, working with professionalism and dynamism to ensure the company can meet the challenges of the 21st-century on the national and international arena.

MECCANISMO A RIBALTA

FLAP DOWN OPENING MECHANISM

F250

F250-R



DESCRIZIONE

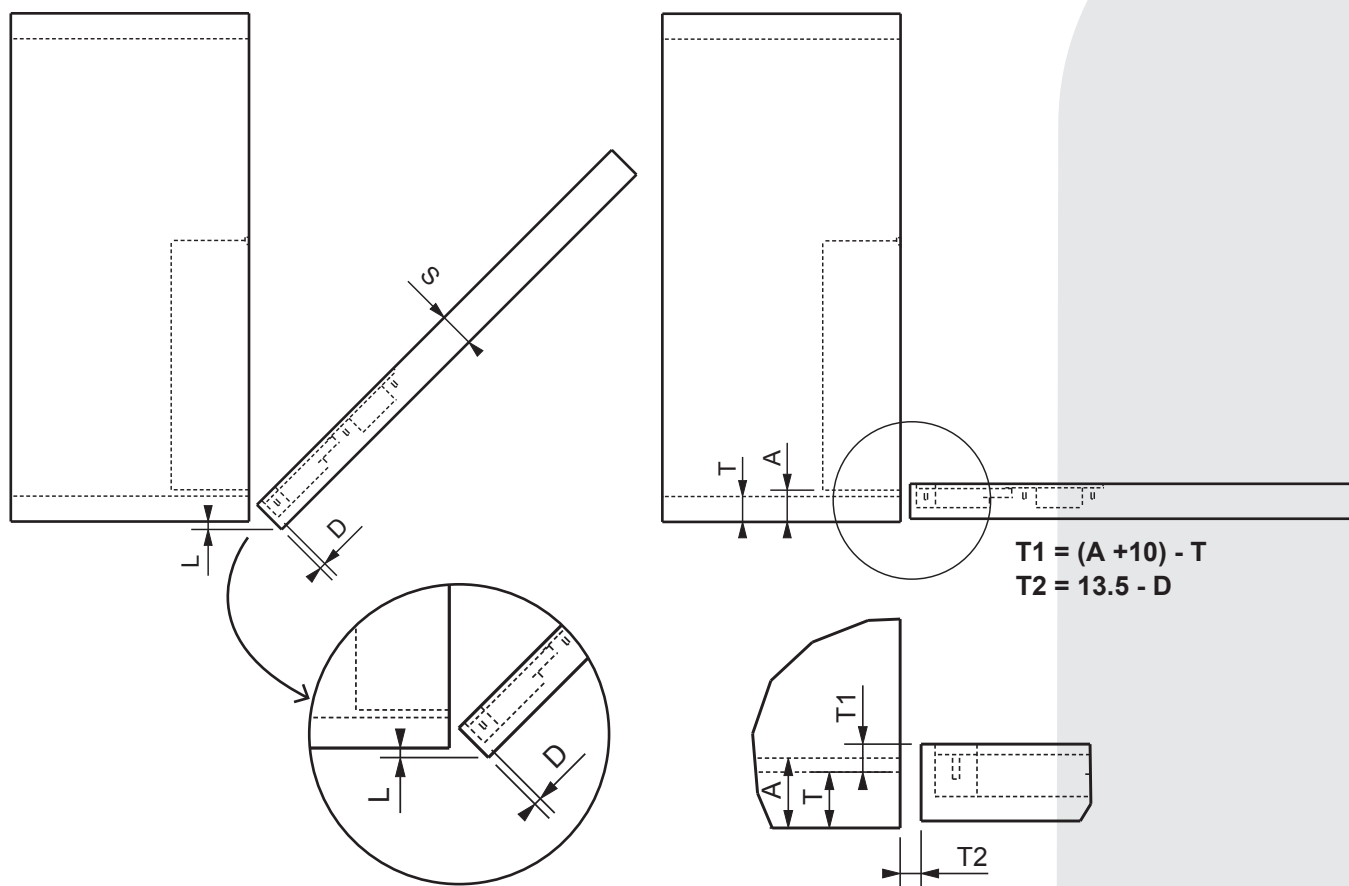
- Meccanismo per ante a ribalta con cerniera integrata;
- Apertura ammortizzata dell'anta;
- Chiusura guidata dell'anta;
- Regolabile in 4 dimensioni: laterale, verticale, frontale e angolo di apertura;
- Regolazione della forza ammortizzante;
- Per ante in legno o con il profilo di alluminio;
- Stesso profilo di alluminio utilizzato con la cerniera F490 e F490R;
- Possibilità di incassare il meccanismo nel fianco del mobile;
- Finitura Nichel e Nero;
- Soluzione brevettata Danco.

DESCRIPTION

- Mechanism for flap doors with integrated hinge;
- Soft opening of the door;
- Guided closing of the door;
- Adjustable in 4 dimensions: lateral, vertical, frontal and opening angle;
- Adjustable damping force;
- For wooden doors or with aluminum profile;
- Same aluminum profile used with the F490 and F490R hinge;
- Possibility of embedding the mechanism in the side of the cabinet;
- Nickel and Black finishing;
- Patented Danco solution.



SPAZIO NECESSARIO PER L'APERTURA DELL'ANTA SPACE REQUIRED FOR DOOR OPENING



		S = SPESSORE ANTA							
		18	20	22	24	26	28	30	32
D3	L=	0,00	0,20	0,50	0,90	1,40	2,10	3,10	4,70
D4	L=	0,00	0,20	0,50	0,90	1,40	2,00	2,90	4,20
D5	L=	0,00	0,20	0,50	0,80	1,30	2,00	2,80	3,90
D6	L=	0,00	0,20	0,50	0,80	1,30	1,90	2,70	3,70

S = SPESSORE ANTA
DOOR THICKNESS

L = LUCE FRA ANTA E FIANCO
DISTANCE BETWEEN DOOR AND SIDE

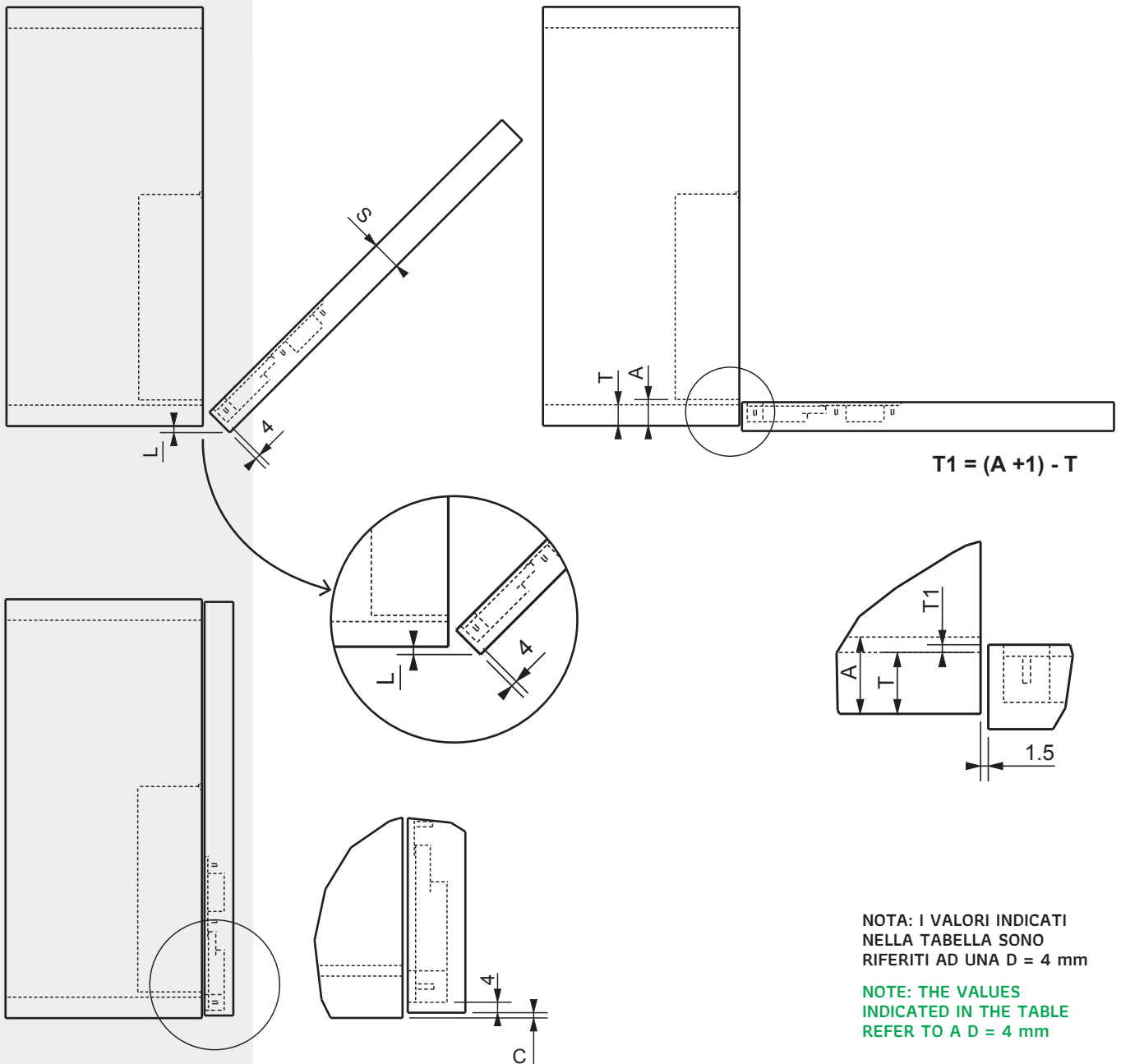
D = DISTANZA FORO ANTA
DRILLING DISTANCE

T = SPESSORE BASE
BOTTOM THICKNESS

NOTA: I VALORI INDICATI NELLA TABELLA SONO RIFERITI AD UN SORMONTO COMPLETO DELL'ANTA SUL FIANCO
NOTE: THE VALUES INDICATED IN THE TABLE REFER TO A COMPLETE OVERLAP OF THE DOOR ON THE SIDE

F250-R

SPAZIO NECESSARIO PER L'APERTURA DELL'ANTA SPACE REQUIRED FOR DOOR OPENING



NOTA: I VALORI INDICATI
NELLA TABELLA SONO
RIFERITI AD UNA D = 4 mm

NOTE: THE VALUES
INDICATED IN THE TABLE
REFER TO A D = 4 mm

		S = SPESSORE ANTA						
		18	20	22	24	26	28	30
C1.0	L=	1,20	2,50	4,10	5,70	7,40	9,20	11,00
C1.5	L=	0,70	2,00	3,50	5,20	7,00	8,70	10,50
C2.0	L=	0,20	1,50	3,00	4,70	6,40	8,20	10,00
C2.5	L=	0,00	1,00	2,50	4,20	6,00	7,70	9,50

S = SPESSORE ANTA
DOOR THICKNESS

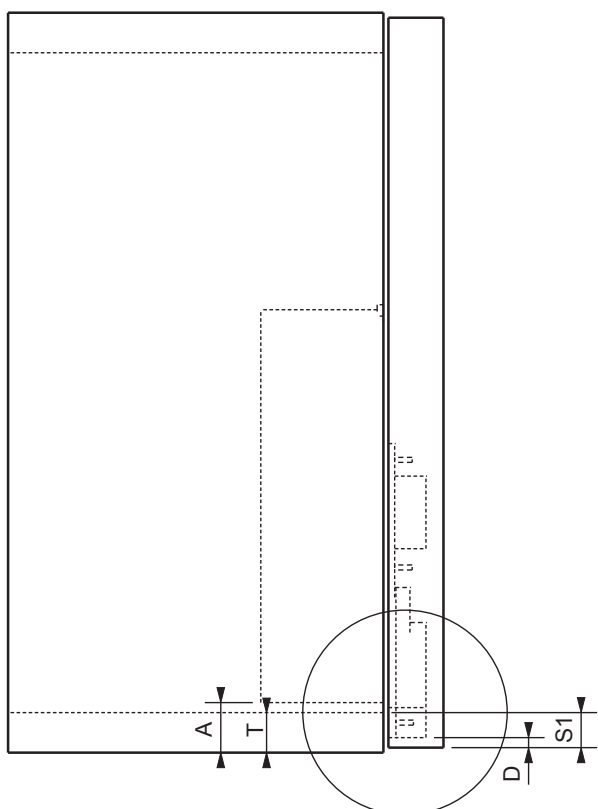
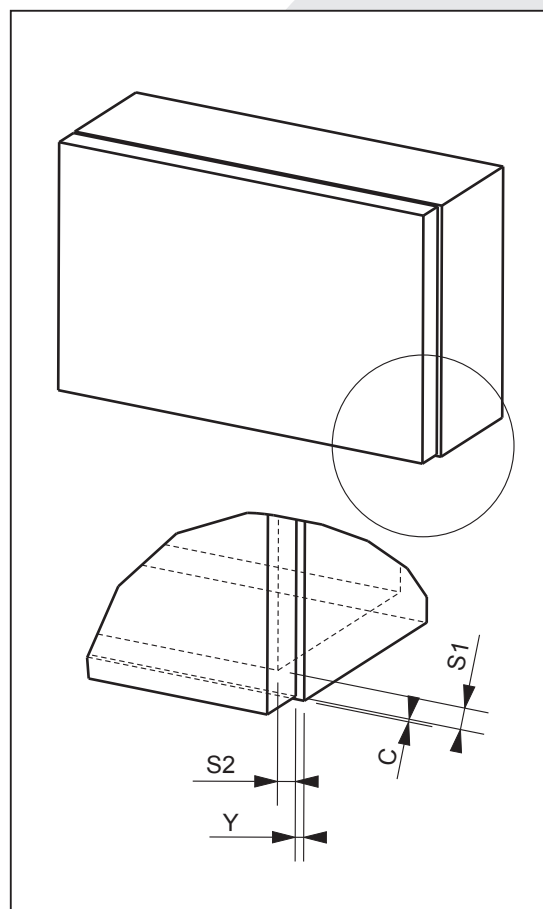
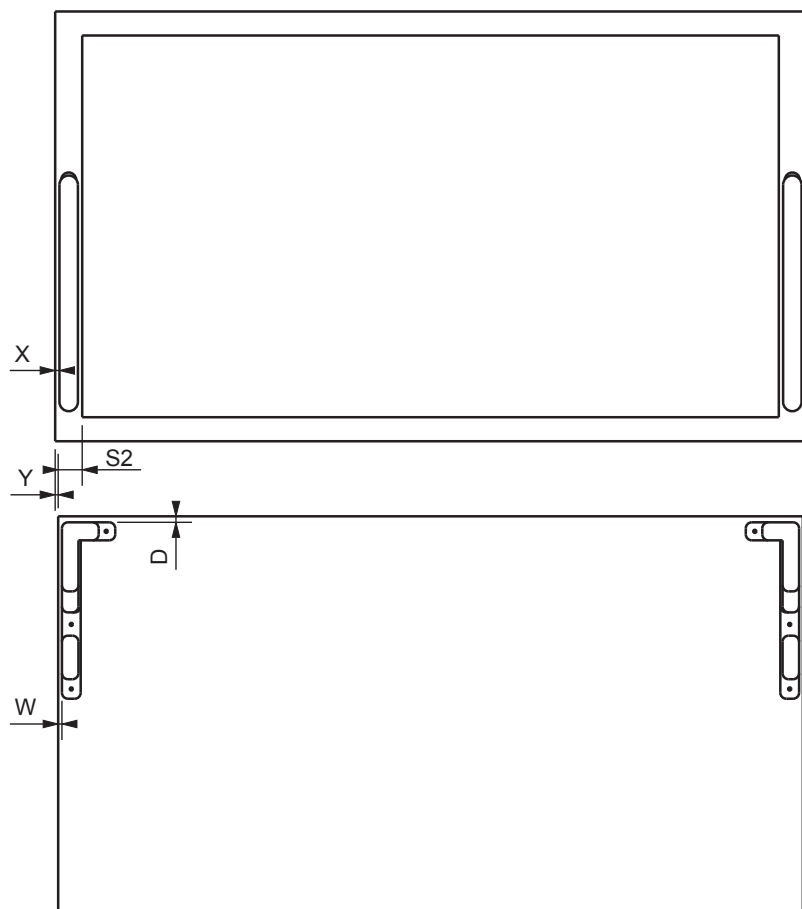
C = RIENTRO DELL'ANTA
DOOR RETURN

L = LUCE FRA ANTA
E FIANCO
DISTANCE BETWEEN
DOOR AND SIDE

D = DISTANZA FORO ANTA
DRILLING DISTANCE

T = SPESSORE BASE
BOTTOM THICKNESS

F250



$$Y = (X+1)-W$$

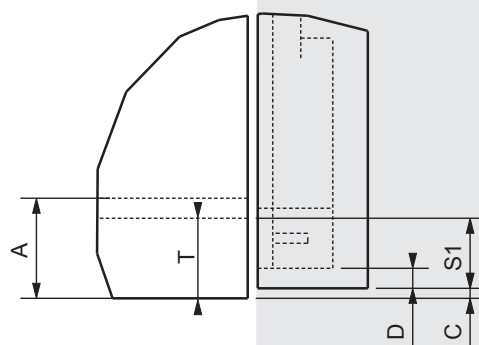
$$W = (X+1)-Y$$

$$X = (W+Y)-1$$

$$A = (16+D)+C$$

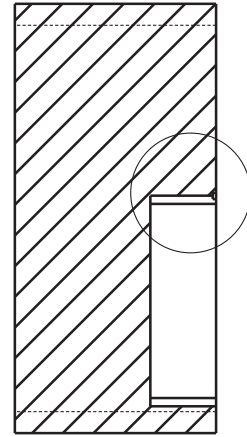
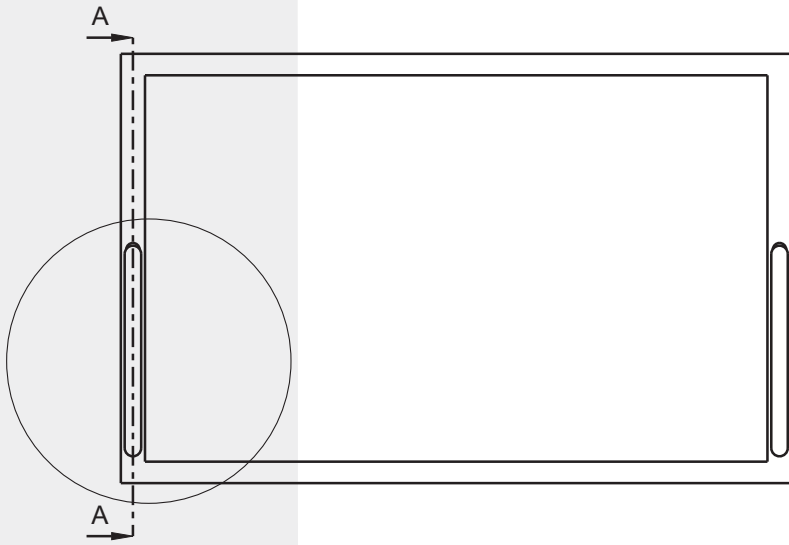
$$W \text{ min} = 2.5 \text{ mm}$$

$$X \text{ min} = 3 \text{ mm}$$

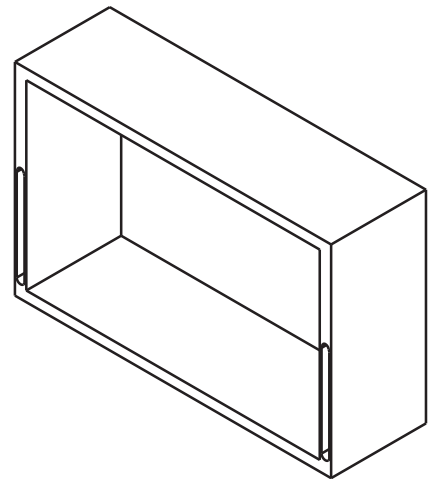
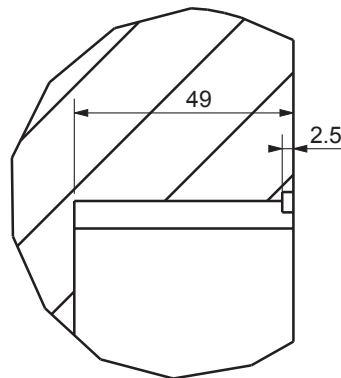
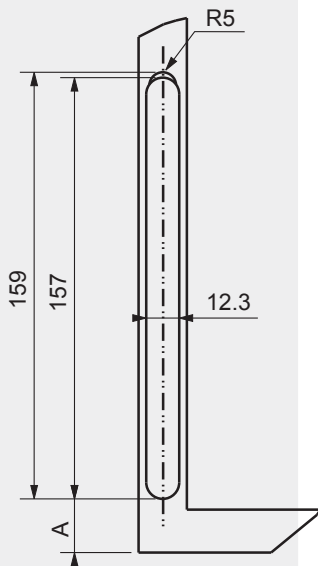


F250

**LAVORAZIONI SUL MOBILE
WORKING ON CABINET**

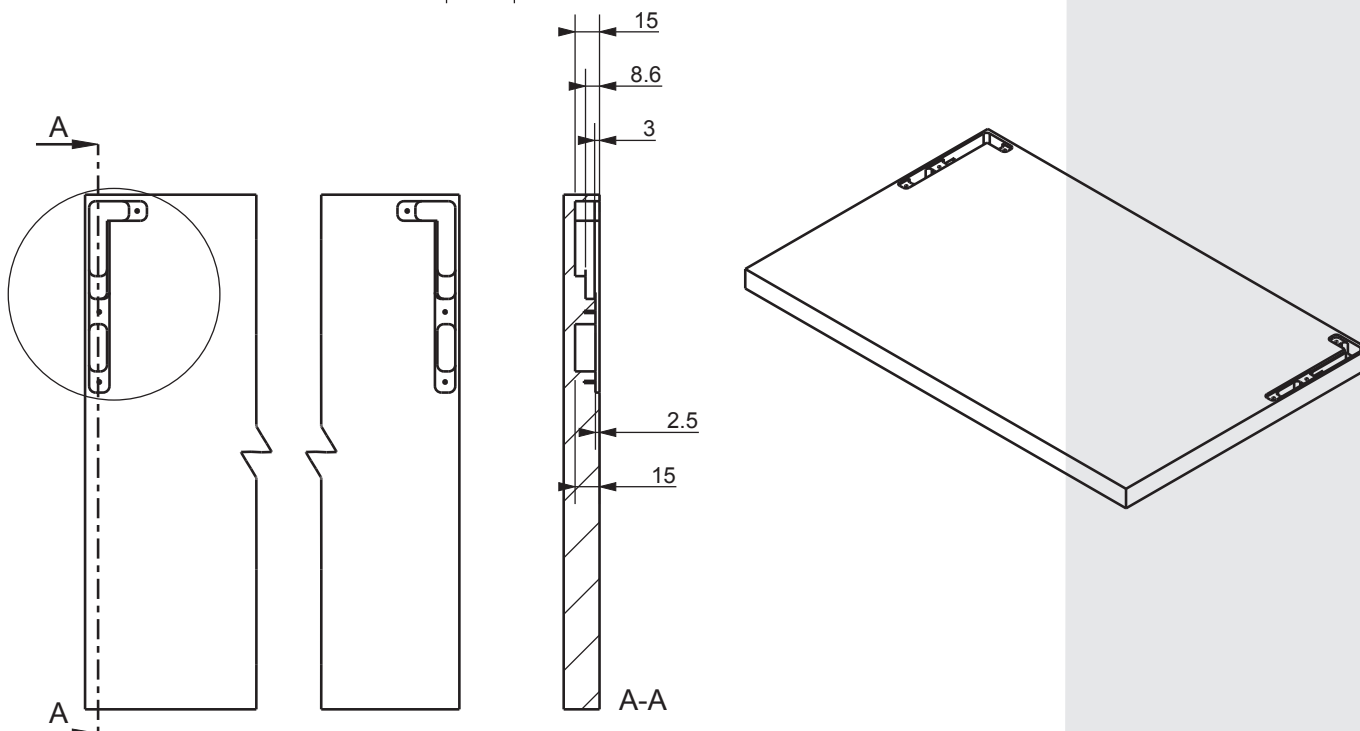
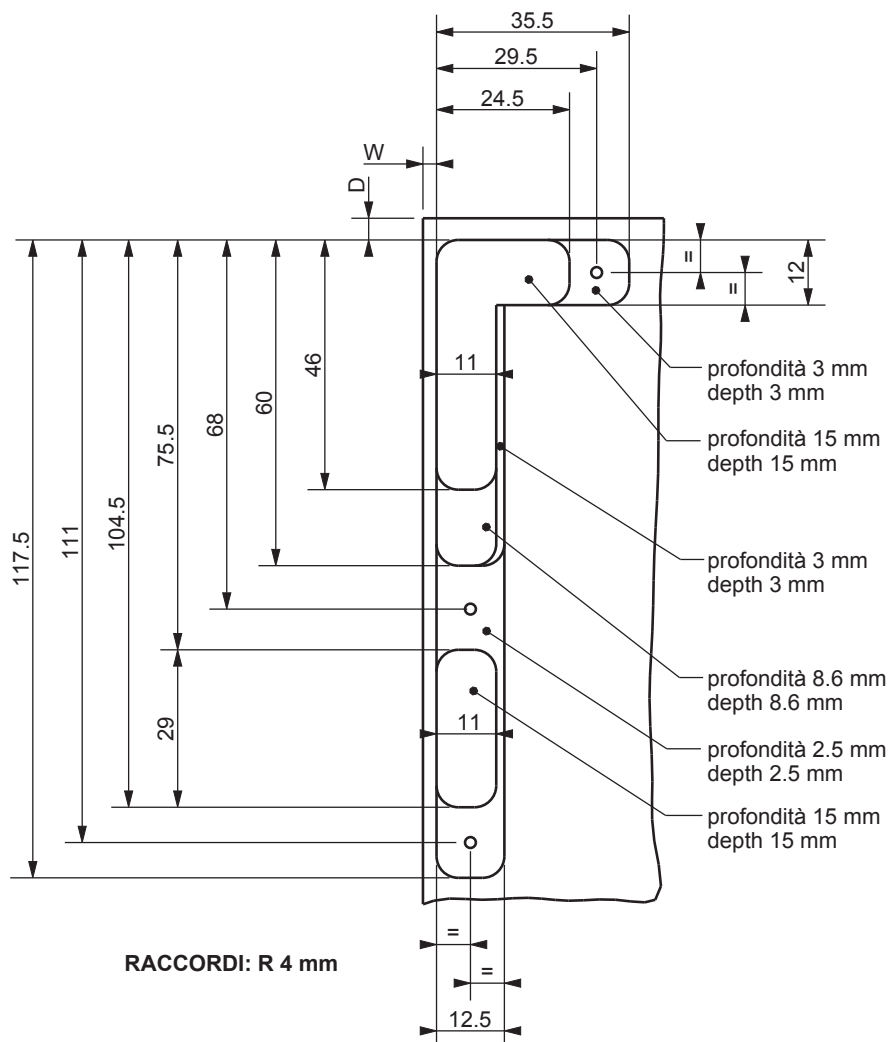


A-A

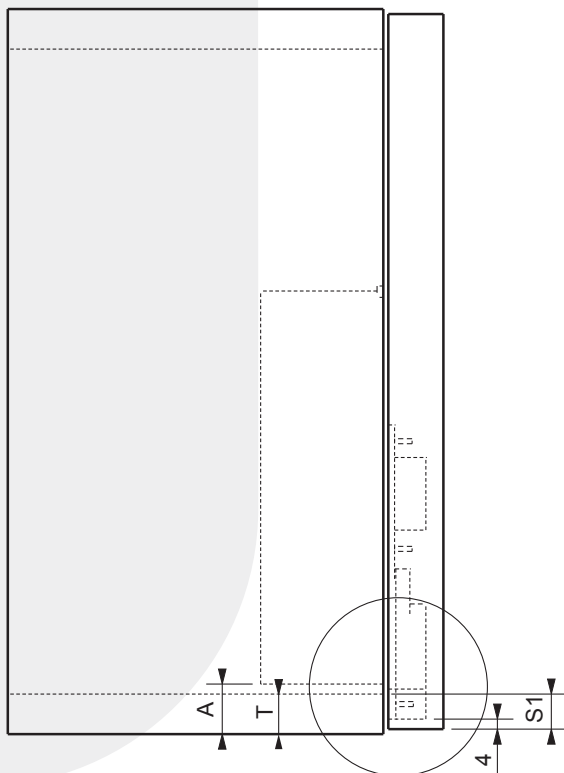
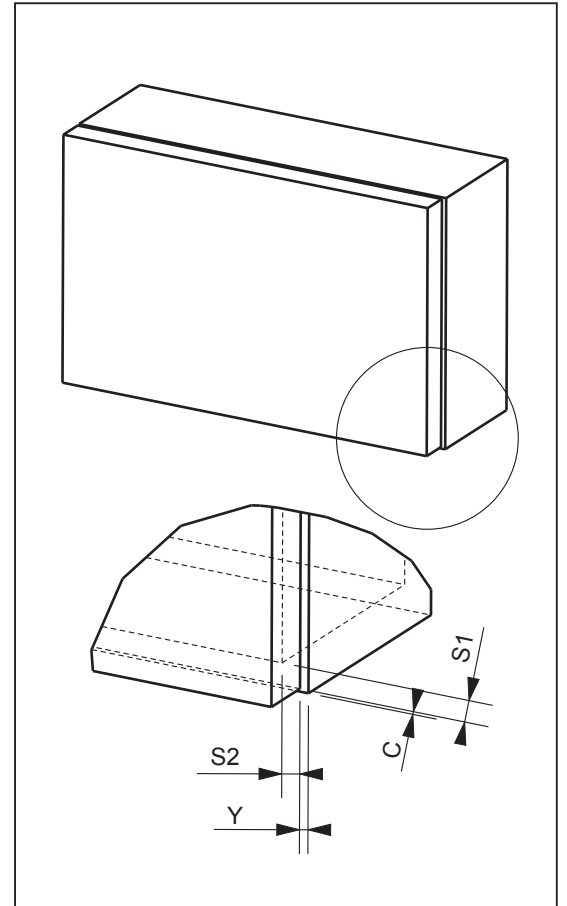
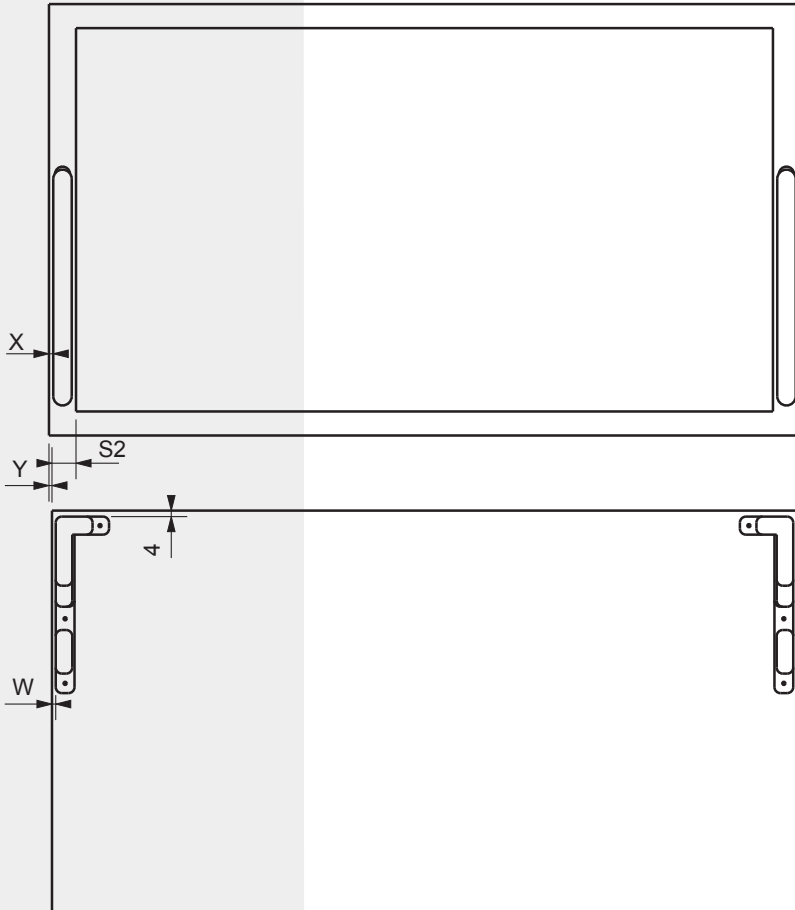


F250

LAVORAZIONI SULL'ANTA WORKING ON DOOR



F250-R



$$Y = (X+1)-W$$

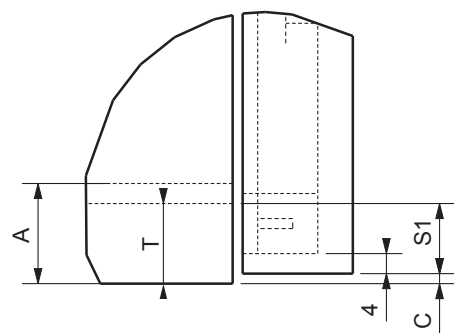
$$W = (X+1)-Y$$

$$X = (W+Y)-1$$

$$A = 19.5+C$$

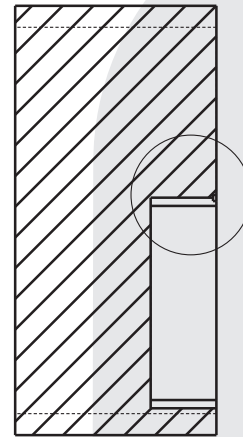
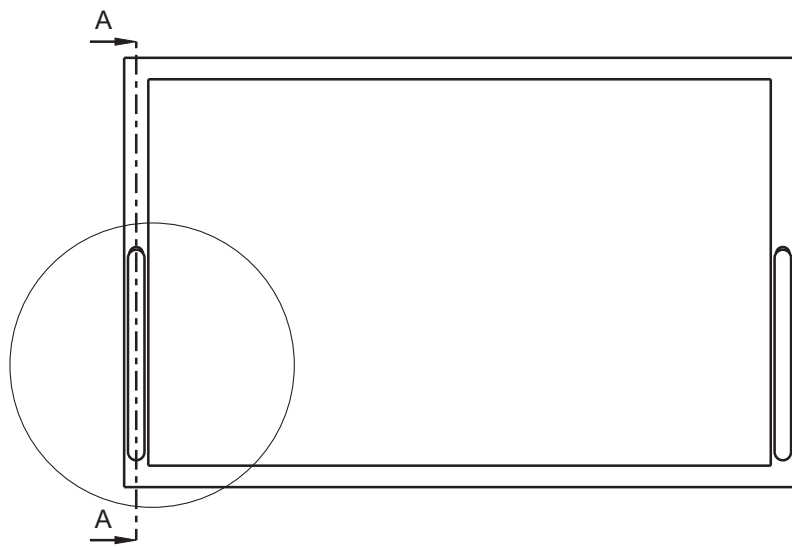
$$W \text{ min} = 2.5 \text{ mm}$$

$$X \text{ min} = 3 \text{ mm}$$

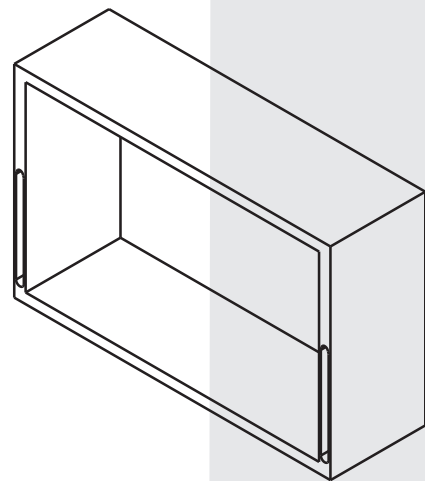
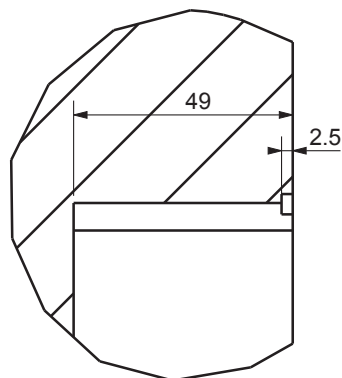
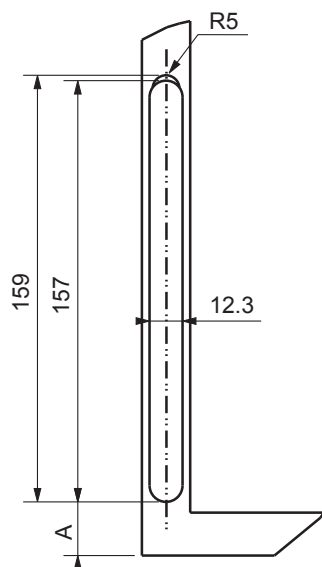


F250-R

LAVORAZIONI SUL MOBILE
WORKING ON CABINET

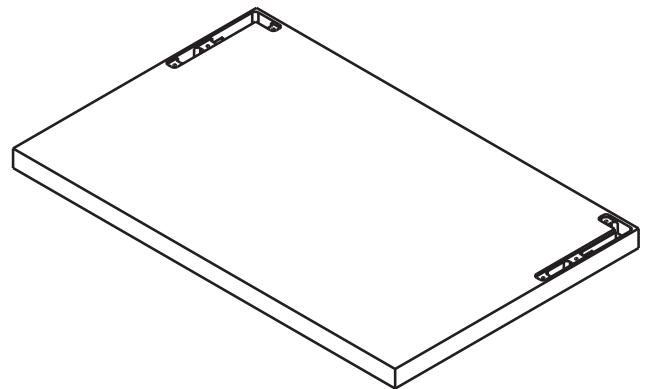
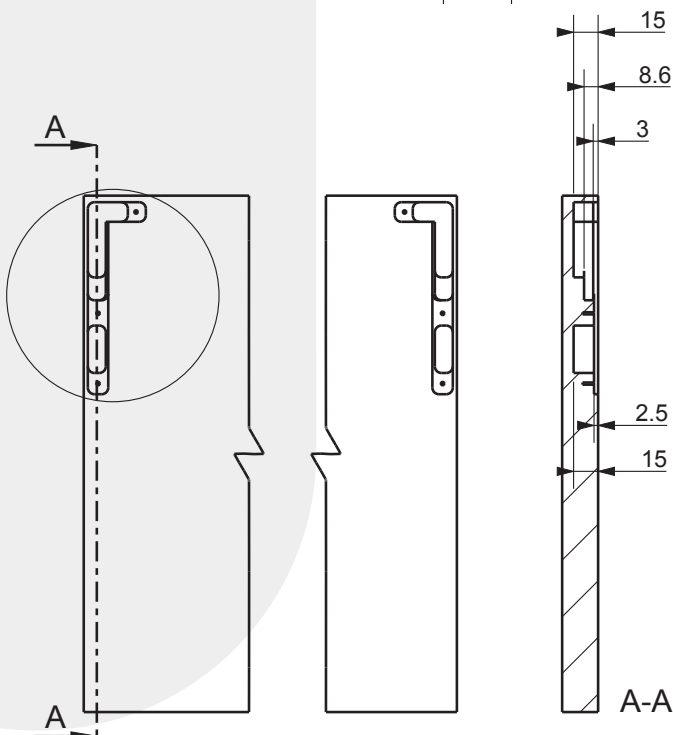
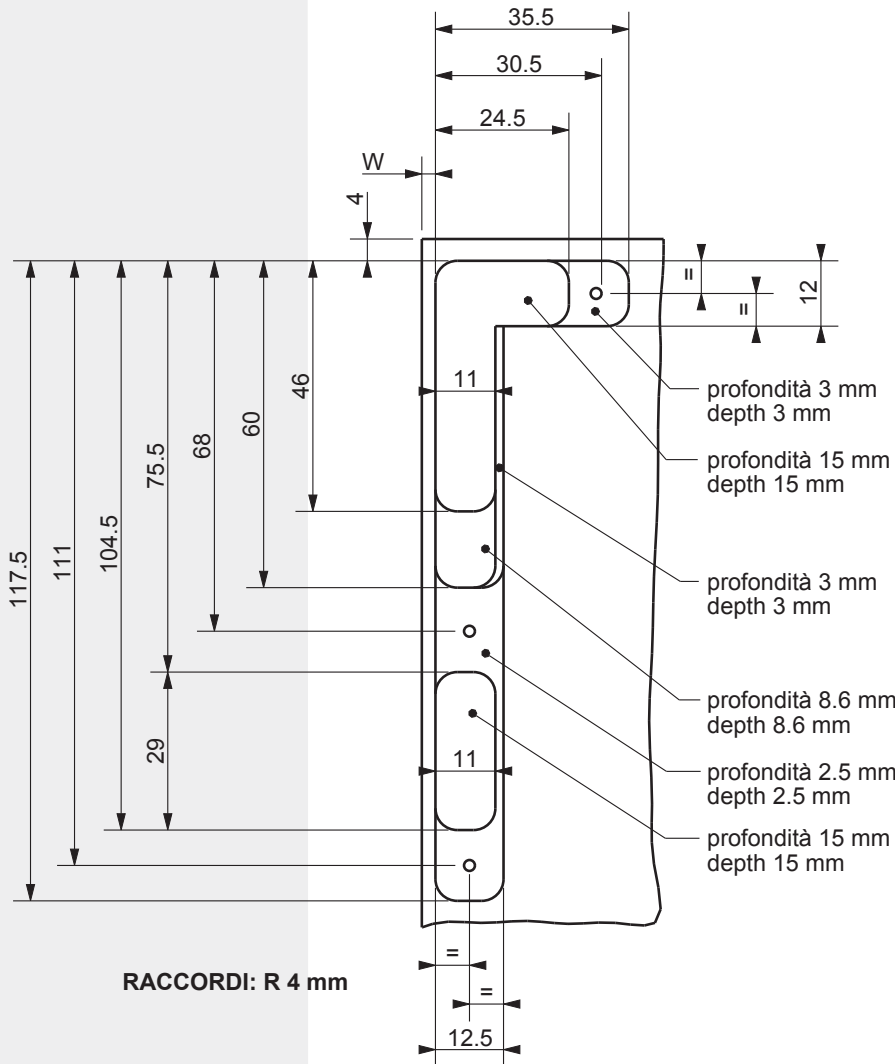


A-A



F250-R

LAVORAZIONI SULL'ANTA WORKING ON DOOR



ACCESSORI PER
ANTA IN ALLUMINIO

ALUMINIUM DOOR
ACCESSORIES

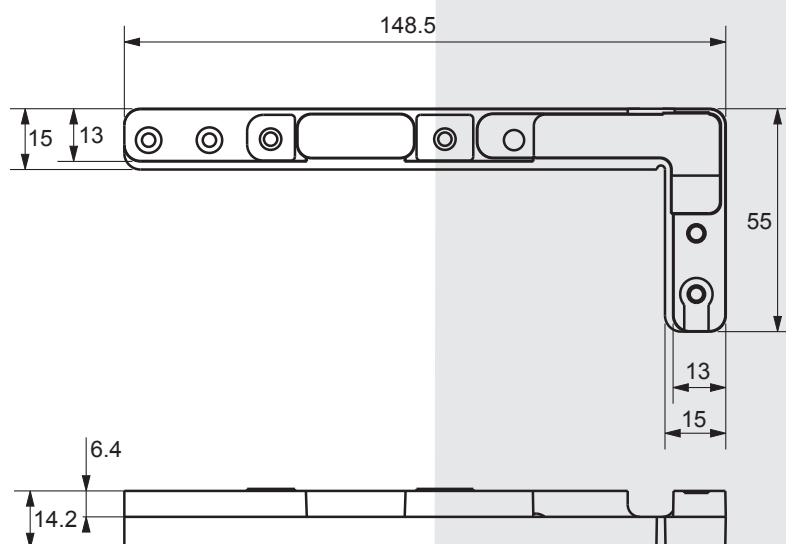
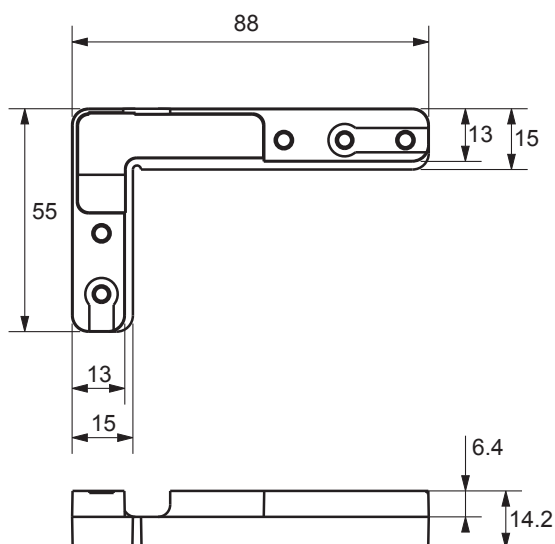


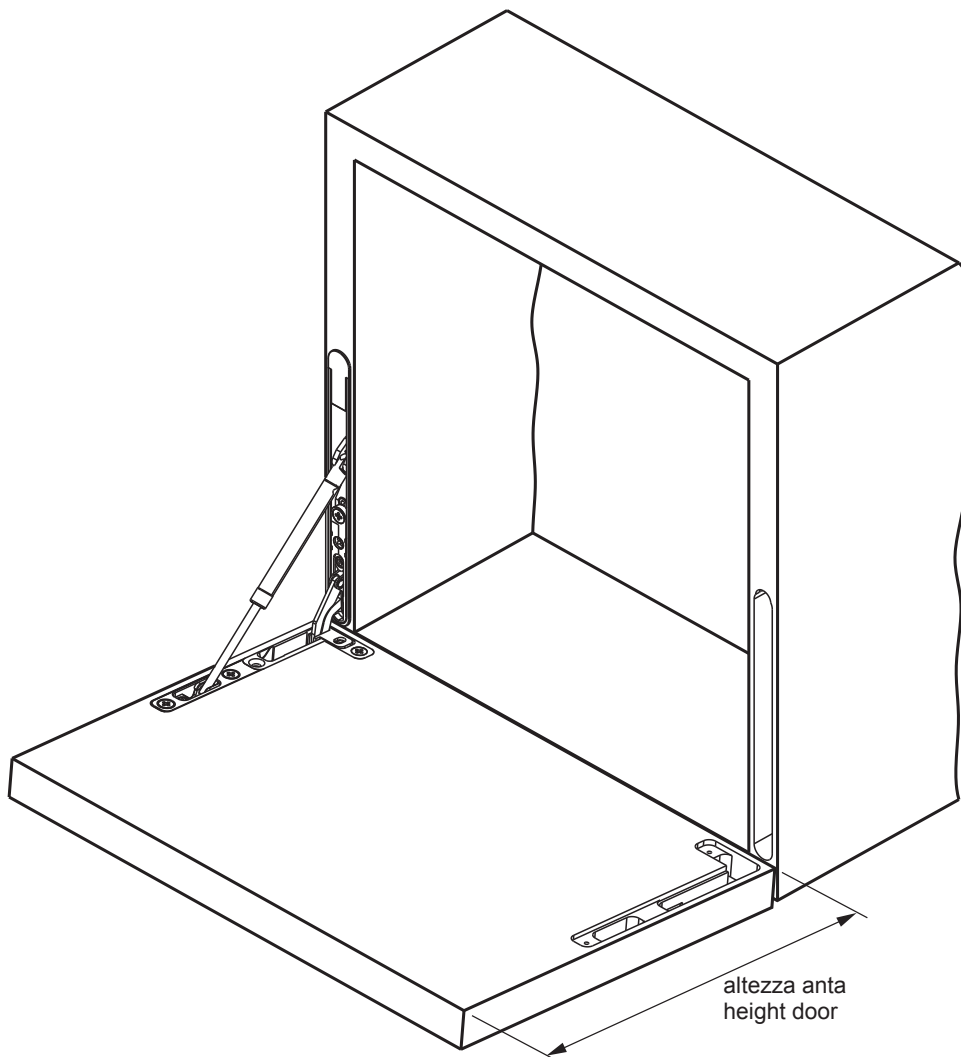
SQUADRETTA DI FISSAGGIO
CORNER CONNECTOR



F255 DX
F255 SX

F256 DX
F256 SX

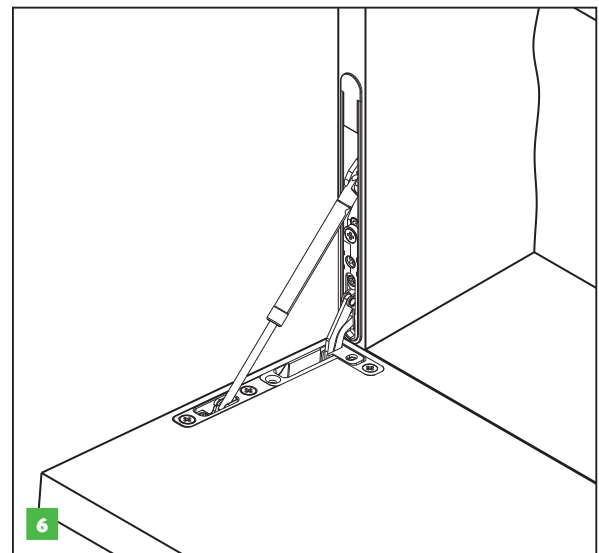
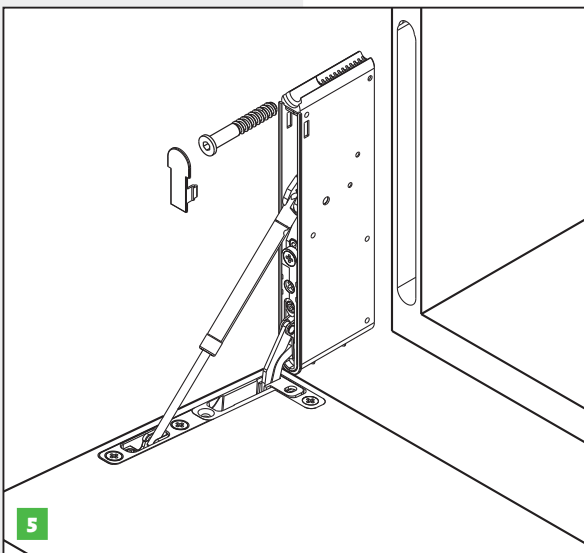
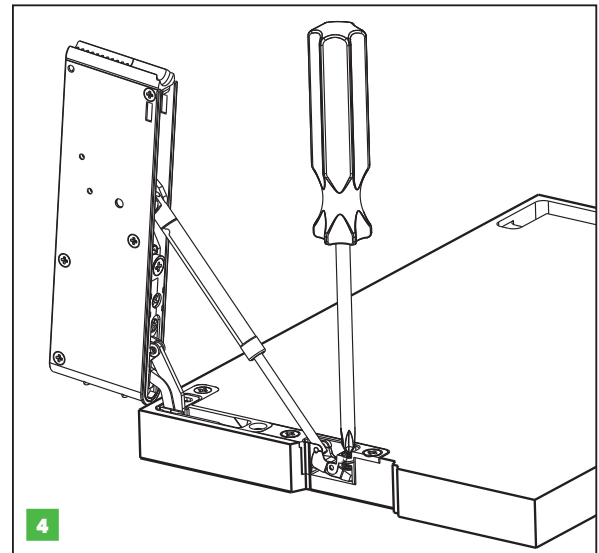
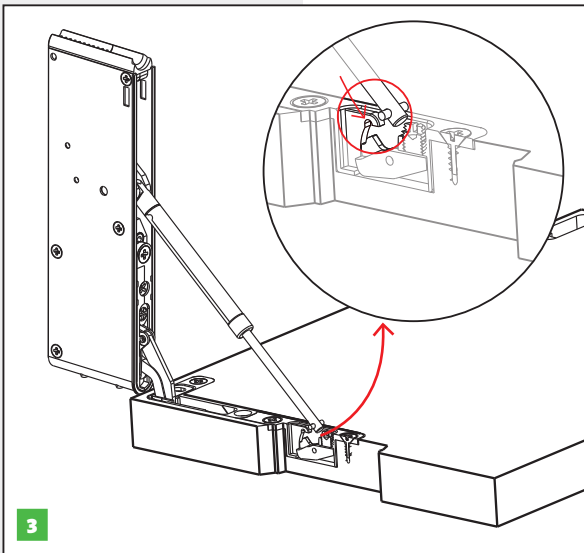
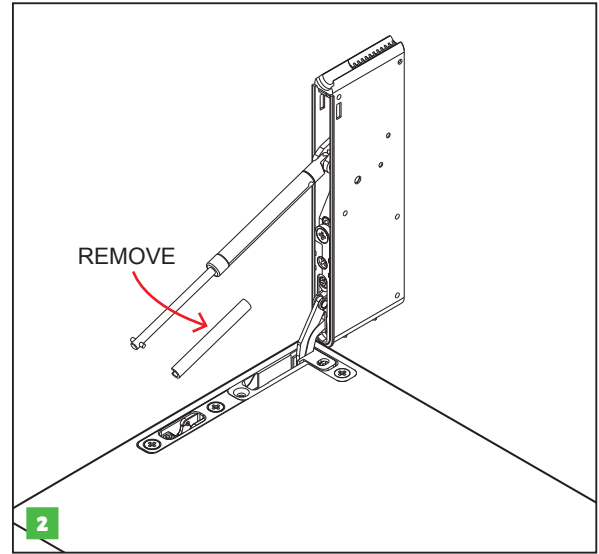
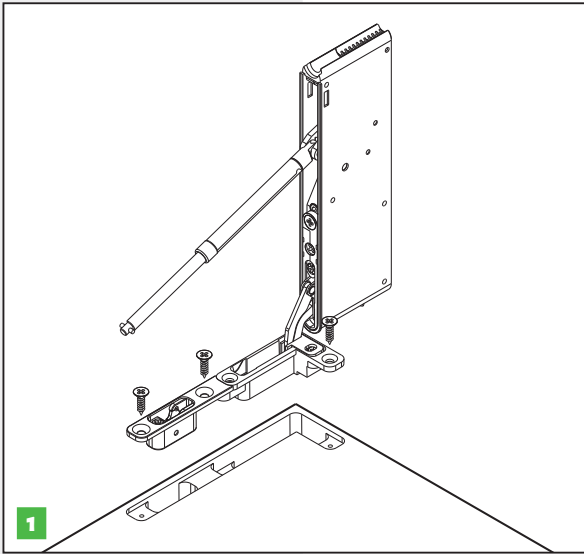




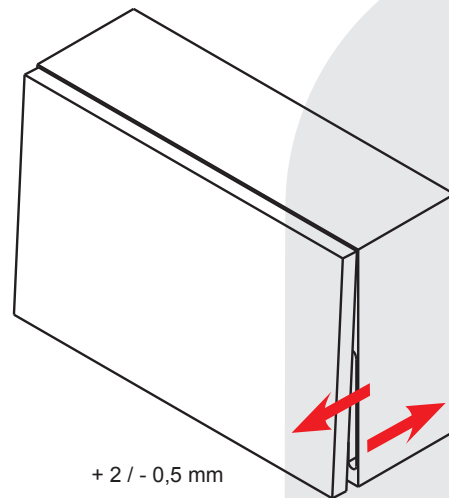
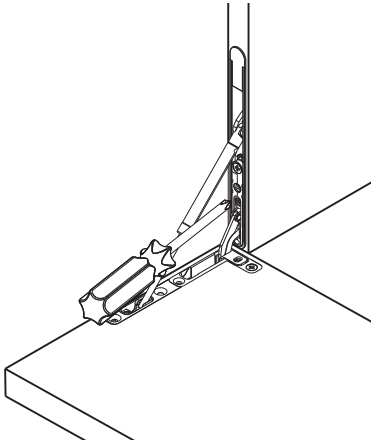
	Configurazione [Newton]		Configuration [Newton]	
	10 N	20 N	30 N	40 N
Altezza anta - Door height	Peso anta Door weight			
200-250 mm	4,5/5,9 kg	6,0/7,5 kg	-	-
251-300 mm	3,5/5,0 kg	5,1/7,0 kg	7,1/8,3 kg	8,4/10,0 kg
301-350 mm	3,0/4,5 kg	4,6/6,5 kg	6,6/8,0 kg	8,1/11,0 kg
351-400 mm	2,5/4,3 kg	4,4/6,0 kg	6,1/7,7 kg	7,8/10,5 kg
401-450 mm	2,3/3,9 kg	4,0/5,0 kg	5,1/7,4 kg	7,5/10,0 kg
451-500 mm	-	-	4,0/6,5 kg	6,6/9,0 kg

IL PESO E LA POSIZIONE DELLA MANIGLIA POSSONO INFLUENZARE LE PRESTAZIONI DEL MECCANISMO

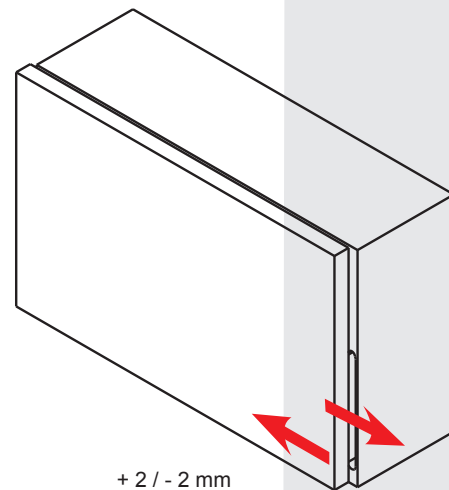
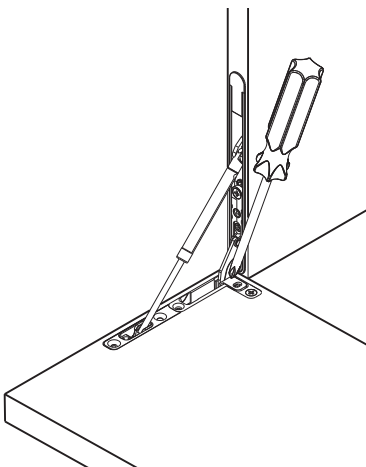
THE WEIGHT AND THE POSITION OF THE HANDLE MAY INFLUENCE THE PERFORMANCE OF THE MECHANISM



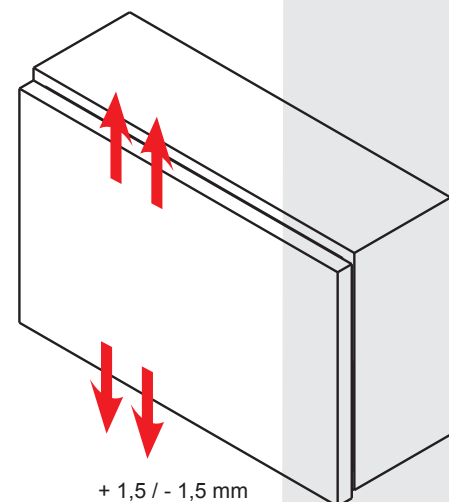
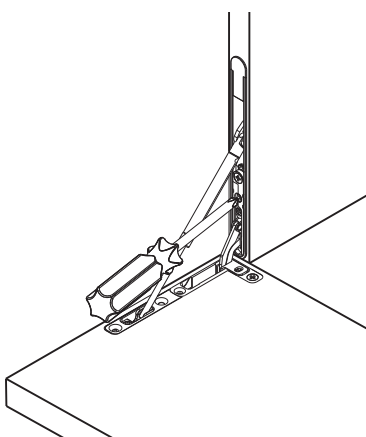
REGOLAZIONE FRONTALE
FRONTAL ADJUSTMENT



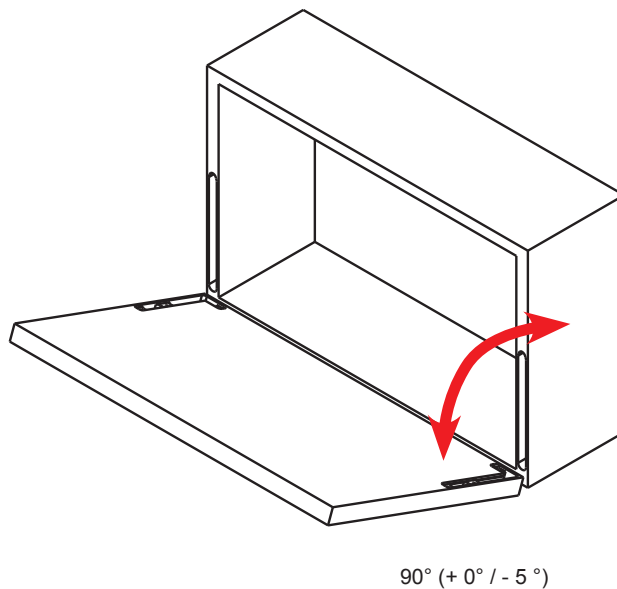
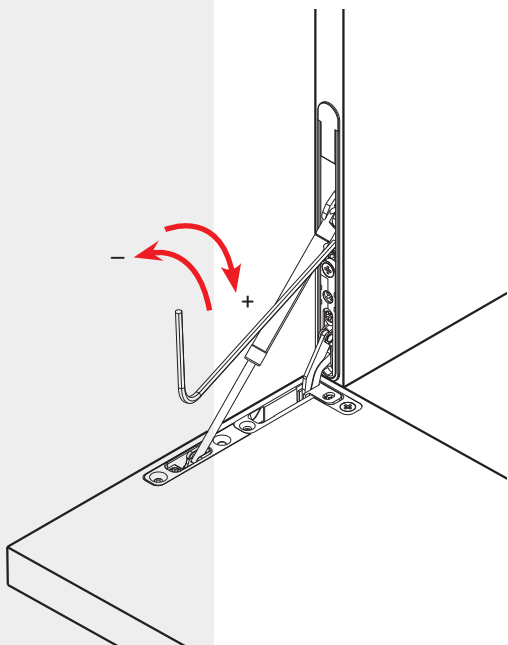
REGOLAZIONE LATERALE DI COPERTURA
LATERAL OVERLAY ADJUSTMENT



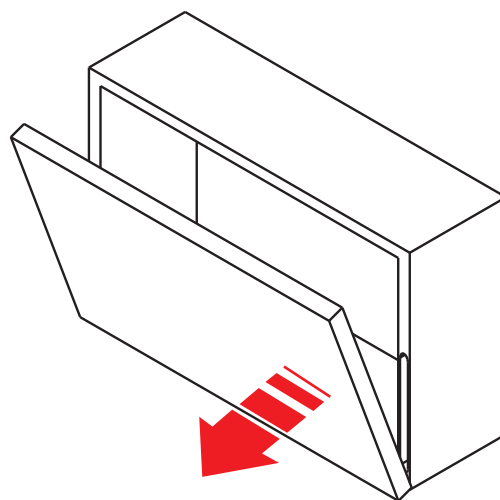
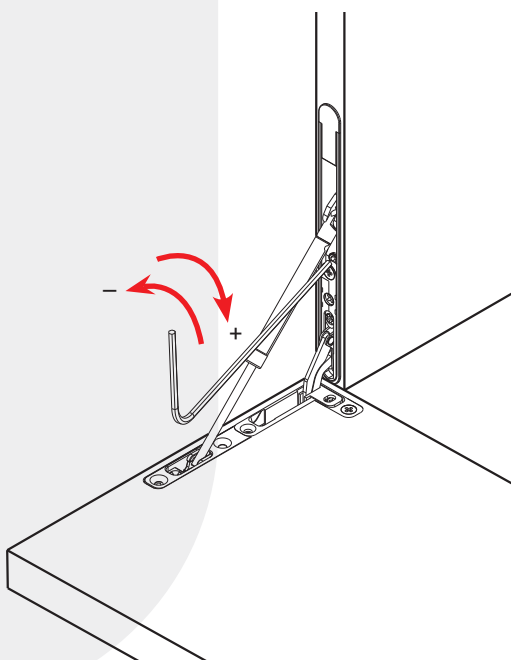
REGOLAZIONE VERTICALE
VERTICAL ADJUSTMENT



REGOLAZIONE ANGOLO DI APERTURA
OPENING ANGLE ADJUSTMENT



REGOLAZIONE ANGOLO DI AMMORTIZZAZIONE
DAMPING ANGLE ADJUSTMENT



ESEMPIO D'ORDINE

EXAMPLE OF ORDER

Per una corretta ordinazione ed un'esatta determinazione del codice seguire le sottoindicate modalità, con la seguente successione:

For a proper order and an exact interpretation of the code, please follow the undermentioned indications in the following order:

Serie
Serie

FK250 DX R 11 / 1

Specifica codice
Specify code

DX - destro / *right*
SX - sinistro / *left*

Versione
Version

-
R

Finitura
Finishing

11 - nero / *black*
44 - nichel / *nichel*

Forza del pistone
Force piston

1 - 10 N
2 - 20 N
3 - 30 N
4 - 40 N

IMBALLO

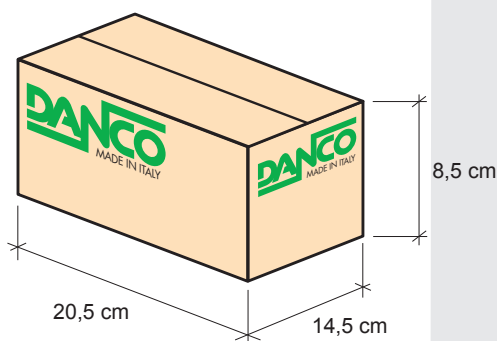
PACKING

CONTENUTO
CONTENTS

Pezzi
Pieces

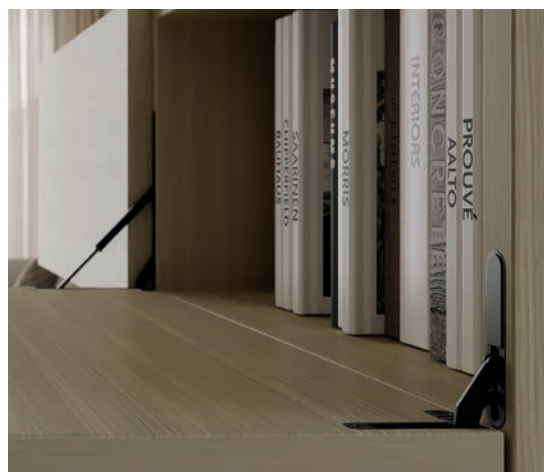
SERIE F250 / F250-R

5



Per ante di dimensione ridotta, è possibile montare 1 meccanismo soltanto da un lato del mobile, abbinato alla sola cerniera dall'altro lato. Si prega di contattare l'ufficio tecnico DANCO per verificarne la fattibilità.

For smaller doors, it is possible to install one mechanism on one side of the cabinet, combined with just the hinge on the other side. Please contact the DANCO technical office to verify feasibility.





DANCO spa

20837 VEDUGGIO (MB) - via Volta, 12

Tel. +39 - 0362 998752 r.a.

Fax +39 - 0362 998730 / +39 - 0362 998078

danco@danco.it

www.danco.it